

# "When do you need your drawings?"

The wait for anchor bolt and reaction drawings can seem to take forever, especially if you're not sure when the manufacturer will send them.

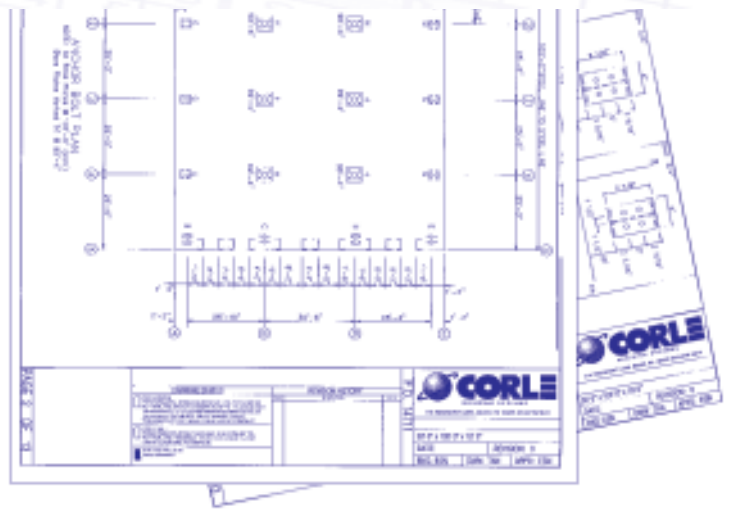
But, if your building is a Corle building, you'll know, because we'll ask, "When do you need your drawings?" Then, we'll confirm a date for delivery.

If you're waiting for more than two weeks for drawings, you're waiting too long. And as we all know, time is money.

At Corle, it's all about customer service -- from the time your order is placed, until the time you take delivery of your project, and beyond. Corle delivers!

## GET THE FULL STORY

If you would like to know more about Corle Building Systems, or would like to become an Authorized Independent Corle Builder, give us a call today! We're here to help with your metal building needs.



*Our commitment to providing the benefits of environmentally friendly products.*



**Corle Building Systems - 114 Rosemont Lane - Imler, PA 16655**  
**Ph: 814-276-9611 - Fax: 814-276-3307 - [www.corle.com](http://www.corle.com)**