

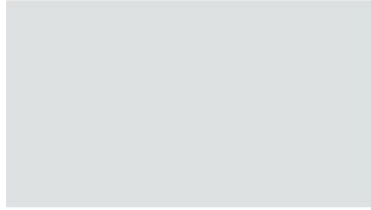


www.corle.com | 814-276-9611

Color Selection Guide featuring TRINAR®



02-SLATE BLUE



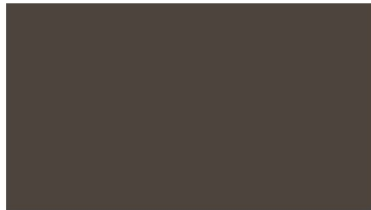
03-ARCTIC WHITE



04-CHARCOAL GREY



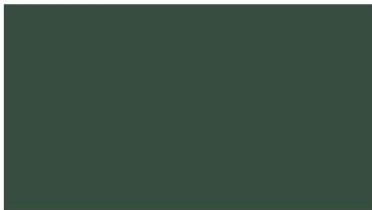
05-BUCKSKIN TAN



06-BURNISHED SLATE



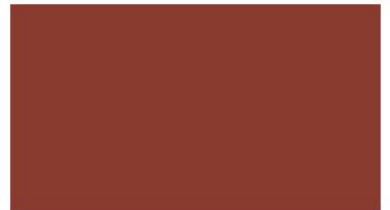
07-PARCHMENT



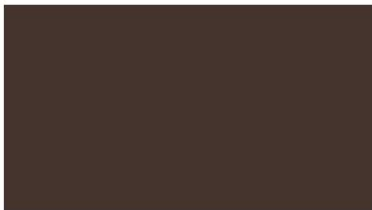
08-EVERGREEN



09-ASH GREY



10-ANTIQUE RED



11-CHOCOLATE BROWN



12-HARBOR BLUE



13-LIGHT STONE

TRINAR® 70% PVDF Fluoropolymer

This tough, flexible, strongly bonded finish provides the following benefits:

- Excellent UV resistance * Excellent heat resistance * Excellent chemical resistance
- Unparalleled gloss and color retention * Uses only the highest quality ceramic and inorganic pigments for the finest metal finish available
- Resists chalking, fading, chipping and cracking * Resists staining due to airborne pollutants

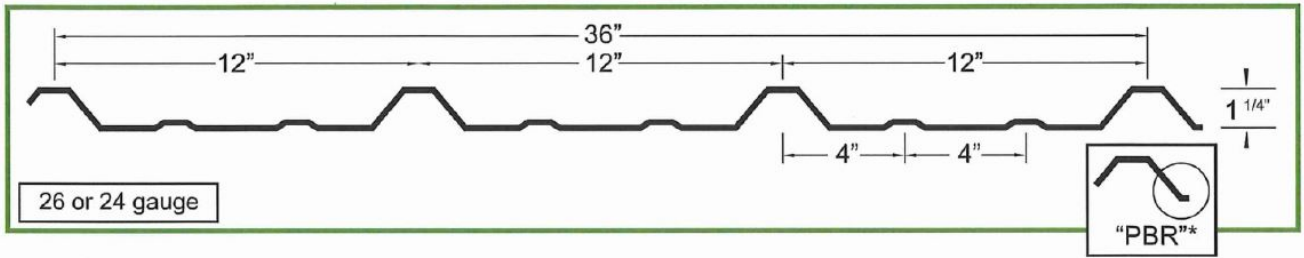
TRINAR®CC colors, formulated in TRINAR®'s COOL CHEMISTRY Series, contain ceramic inflective pigments which are designed to reflect infrared energy and comply with Energy Star guidelines

All TRINAR® colors featured in the Color Selection Guide include a 40-year limited warranty.

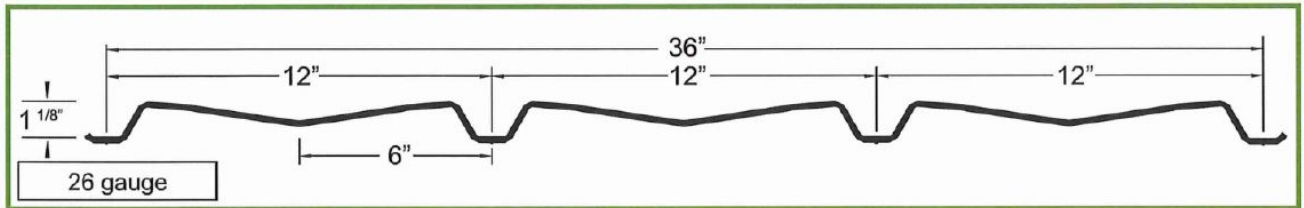
TRINAR®

TRINAR® is a registered trademark of AkzoNobel.

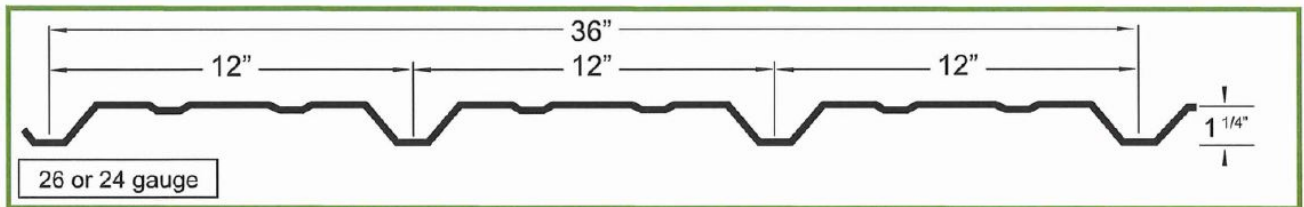
CORLE "R" PANEL



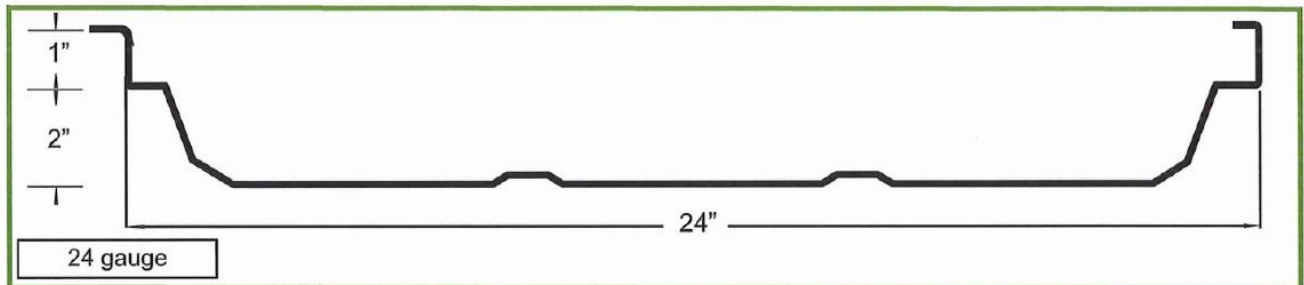
CORLE "A" PANEL[†]



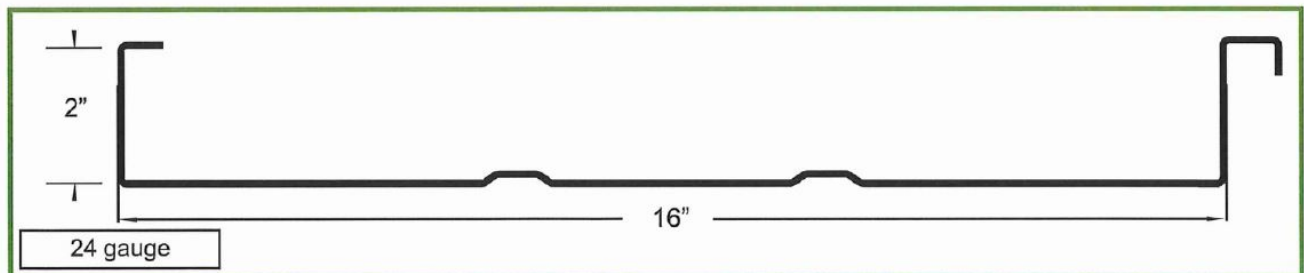
REVERSE ROLL PANEL[†]



SEAM-LOK



VERTICAL-LOK



Visit www.corle.com or ask your Authorized Corle Builder to view the Corle Architectural Manual for complete panel details.

*"PBR" used on roof and wall panels. †Corle "A" Panel and Reverse Roll Panel are available for wall panels only.